

You are invited to attend a CME symposium

# Current Approaches to the Treatment of Myasthenia Gravis: Meeting the Clinical Challenge

**Marriott Wardman Park Hotel  
Maryland Suite, A-C  
Washington, DC**

**Thursday, October 12, 2006**

**Registration: 11:30 AM – 12:00P M  
Scientific Session: 12:00 PM – 1:30 PM**

## **Opening Remarks / Overview of Learning Objectives**

*Chairperson*

*Co-Course Director*

**Donald B. Sanders, MD**

Professor of Medicine  
Neurology  
Duke University Medical Center  
Durham, N.C.

*Co-Course Director*

**Joe F. Jabre, MD**

Professor  
Department of Neurology  
Boston University School of Medicine  
Boston

*Faculty*

## **Neurology Case Files: The Clinical Challenge of Myasthenia Gravis**

**Carlayne Jackson, MD**

Professor  
Department of Neurology  
University of Texas Health Science Center  
San Antonio

## **From Diagnostics to Clinical Outcomes: An Approach to Developing an Optimum Treatment Plan**

**Matthew N. Meriggioli, MD**

Director, Section of Neuromuscular Disease  
Department of Neurology and Rehabilitation  
University of Illinois Medical Center  
Chicago

## **Evaluating Treatment Choices in Myasthenia Gravis**

**Donald B. Sanders, MD**

### **Statement of Need**

Myasthenia gravis (MG) is an autoimmune disease that affects the neuromuscular system. While scientists and clinicians have made great strides in understanding the immunopathology of this disease, traditional treatments for MG are limited by frequent adverse events and may not offer sustained symptom control or long-term remission. Thus, new strategies are needed to improve patient outcomes. This program will review current treatment approaches and recent advances in the treatment of patients with MG.

### **Target Audience**

This activity is designed for neurologists, physiatrists, and other clinicians interested or involved in the diagnosis and treatment of patients with MG.

### **Objectives**

At the conclusion of this symposium, the participants should understand the diagnosis and treatment of MG. In addition, it is expected that participants will be able to:

- Describe the progressive pathophysiology of MG.
- Review current diagnostic parameters (immunologic and electrodiagnostic).
- Identify treatment options, describe their mechanism of action, and describe their place in the therapy of MG.

### **Accreditation**

This activity has been planned and implemented in accordance with the Essential Areas and Policies of the Accreditation Council for Continuing Medical Education (ACCME) through the joint sponsorship of Boston University School of Medicine and International Medical News Group. Boston University School of Medicine is accredited by the ACCME to provide continuing medical education for physicians.

### **Credit Designation**

Boston University School of Medicine designates this educational activity for a maximum of 1.5 *AMA PRA Category 1 Credit(s)*<sup>™</sup>. Physicians should only claim credit commensurate with the extent of their participation in the activity.

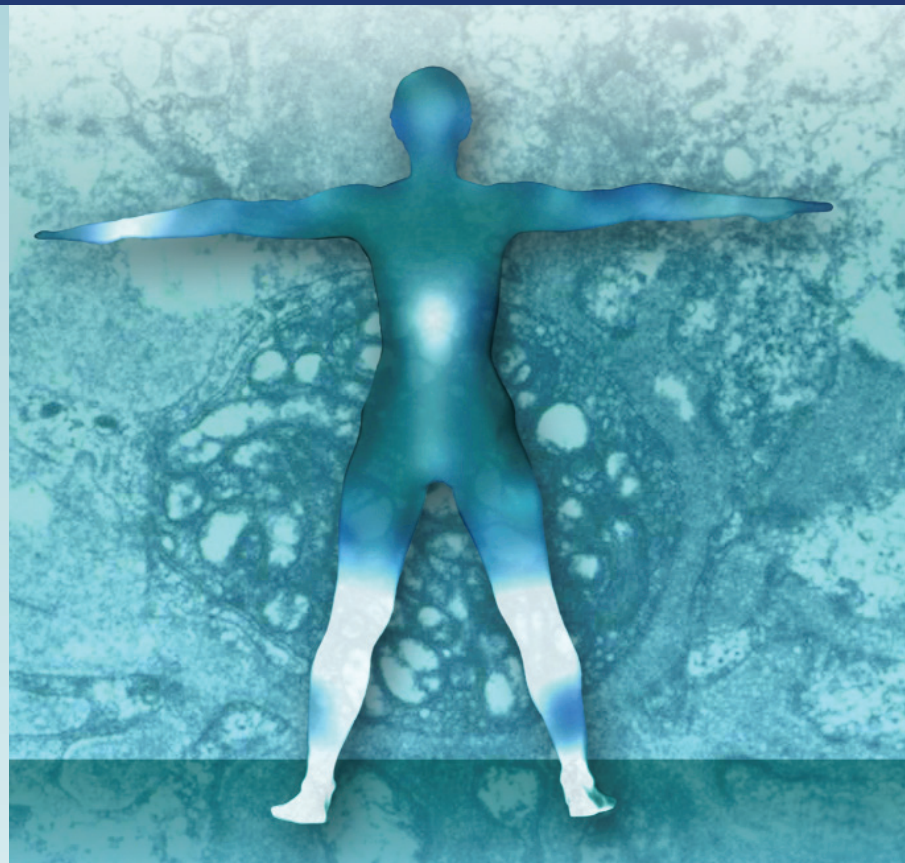
### **Registration**

To register for this program, please log onto [www.bu.edu/cme](http://www.bu.edu/cme) or call 1-800-688-2475 or 617-638-4605. **There is no fee required to attend this activity.**

### **Commercial Support**

This activity is supported by an unrestricted educational grant from **Aspreva**

This activity is not part of the official scientific program of the AANEM.



Jointly sponsored by:



INTERNATIONAL  
MEDICAL NEWS  
GROUP



Boston University  
School of Medicine